

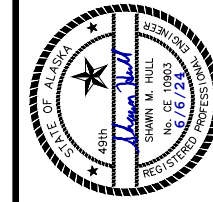
SHEET INDEX

- G1.01 COVER
- C2.01 PLAN AND PROFILE

CITY OF PALMER FIRE TRAINING CENTER DRAINAGE IMPROVEMENTS

PALMER, ALASKA

REVISIONS	MARK	DATE	DESCRIPTION
	1		
	2		
	3		
	4		
	5		



HDL ENGINEERING Consultants LLC
 civil - geotechnical - surveying - environmental - material testing
 ANCHORAGE MAT-SU KENAI
 907.564.2120 907.746.5230 907.564.2120
 3335 Arctic Boulevard, Suite 100 Anchorage, AK 99503
 www.HDLalaska.com
 AECL861

ABBREVIATIONS

AC	ASPHALT CONCRETE
APPROX	APPROXIMATELY
ARRC	ALASKA RAILROAD CORPORATION
ASTM	AMERICAN STANDARD TESTING MATERIALS
ADOT&PF	ALASKA DEPARTMENT OF TRANSPORTATION AND PUBLIC FACILITIES
BV	BUTTERFLY VALVE
CL	CENTERLINE
CL	CLASS
CMP	CORRUGATED METAL PIPE
CONT'D	CONTINUED
CPEP	CORRUGATED POLYETHYLENE PIPE
CPSS	CITY OF PALMER STANDARD SPECIFICATIONS
CY	CUBIC YARD
D	DEGREE
DEMO	DEMOLISH
DIA	DIAMETER
E	EASTING
EA	EACH
EL	ELEVATION
ELEC	ELECTRICAL
ELEV	ELEVATION
EW	EACH WAY
EXIST	EXISTING
FG	FINISH GRADE
FO	FIBER OPTIC
F&I	FURNISH AND INSTALL
HMA	HOT MIX ASPHALT
HORIZ	HORIZONTAL
L	LENGTH
LT	LEFT
LF	LINEAR FEET
MAX	MAXIMUM
MEA	MATANUSKA ELECTRIC ASSOCIATION
MH	MANHOLE
MIN	MINIMUM
MSB	MATANUSKA-SUSITNA BOROUGH
N	NORTH OR NORTHING
NE	NORTHEAST
NFS	NON FROST SUSCEPTIBLE

ABBREVIATIONS (CONT'D)

NIC	NOT IN CONTRACT
NO.	NUMBER
NTS	NOT TO SCALE
OC	ON CENTER
OSHA	OCCUPATIONAL SAFETY AND HEALTH ADMINISTRATION
PT	POINT OF TANGENCY
PW	PATHWAY
PVMT	PAVEMENT
R	RADIUS
REINF	REINFORCEMENT
REQ'D	REQUIRED
ROW	RIGHT-OF-WAY
RT	RIGHT
S	SOUTH
SCH	SCHEDULE
SD	STORM DRAIN
SF	SQUARE FOOT
SIM	SIMILAR
SS	STAINLESS STEEL
SSCO	SANITARY SEWER CLEANOUT
SSMH	SANITARY SEWER MANHOLE
STA	SURVEY STATION
SW	SOUTHWEST, SIDEWALK
T	TANGENT
TELE	TELEPHONE
TCP	TEMPORARY CONSTRUCTION PERMIT
TYP	TYPICAL
UGE	UNDERGROUND ELECTRIC
UNO	UNLESS NOTED OTHERWISE

LEGEND

PROPOSED	EXISTING	
○	○	FIRE HYDRANT
	○	WATER VALVE
	○	SANITARY SEWER MANHOLE
	○	STORM DRAIN MANHOLE
	○	ELECTRIC LOAD CENTER
	○	CURB INLET
	○	STREET LIGHT
	○	UTILITY POLE
	○	SPECIAL DITCH
---	---	EDGE OF GRAVEL
---	---	PAVEMENT LIMITS
---	---	PROPERTY LINE
---	---	STORM DRAIN
---	---	WATER MAIN
---	---	SANITARY SEWER
---	---	GAS LINE
---	---	OVERHEAD TELEPHONE
---	---	UNDERGROUND TELEPHONE
---	---	OVERHEAD CABLE - TV
---	---	UNDERGROUND CABLE - TV
---	---	BUILDING
---	---	EXISTING GATE & POLES

PROJECT NOTES

- ALL CONSTRUCTION SHALL BE PERFORMED IN ACCORDANCE WITH THE CITY OF PALMER STANDARD SPECIFICATIONS FOR STREETS - DRAINAGE - UTILITIES - PARKS (DATED 2018) AND THE SPECIAL PROVISIONS PREPARED FOR THIS CONTRACT.
- THE CONTRACTOR AGREES THAT, IN ACCORDANCE WITH GENERALLY ACCEPTED CONSTRUCTION PRACTICES AND THE GENERAL REQUIREMENTS, THE CONTRACTOR WILL BE REQUIRED TO ASSUME SOLE AND COMPLETE RESPONSIBILITY FOR JOB SITE CONDITIONS DURING THE COURSE OF CONSTRUCTION OF THE PROJECT, INCLUDING SAFETY OF ALL PERSONS AND PROPERTY. THIS REQUIREMENT SHALL BE MADE TO APPLY CONTINUOUSLY AND NOT BE LIMITED TO NORMAL WORKING HOURS.
- THE CONTRACTOR SHALL ACCEPT THE SITE IN ITS PRESENT CONDITION.
- OTHER CONTRACTORS OR THE UTILITY COMPANIES MAY BE WORKING ON THE SAME PROJECT SITE OR IN THE VICINITY DURING THE PROGRESS OF THIS CONTRACT'S WORK. CONTRACTOR SHALL COORDINATE HIS WORK WITH ALL OTHER CONTRACTORS OR UTILITY COMPANIES WORKING IN THE AREA.
- CONTRACTOR SHALL COMPLY WITH THE REQUIREMENTS OF THE INTERNATIONAL BUILDING CODE, STATE AND FEDERAL OCCUPATIONAL HEALTH ADMINISTRATIONS (OSHA), AND ALL OTHER FEDERAL, STATE AND LOCAL LAWS, REGULATIONS AND PERMIT CONDITIONS PERTAINING TO THIS PROJECT. ANY WORK PERFORMED BY THE CONTRACTOR CONTRARY TO SUCH LAWS, REGULATIONS OR CONDITIONS SHALL BE AT THE CONTRACTOR'S SOLE RISK AND EXPENSE.
- THE CONTRACTOR SHALL PROVIDE ALL PERMITS WHICH ARE NOT SPECIFICALLY INDICATED AS PROVIDED BY THE OWNER IN THE CONTRACT DOCUMENTS.
- ALL SURVEYING AND LAYOUT SHALL BE PROVIDED BY THE CONTRACTOR UNLESS NOTED OTHERWISE.
- EXISTING BURIED AND ABOVE GRADE UTILITIES ARE SHOWN IN THEIR APPROXIMATE LOCATIONS. THE CONTRACTOR SHALL CONTACT THE LOCATE CALL CENTER OF ALASKA, AS WELL AS ANY NON-PARTICIPATING UTILITIES, INCLUDING THE CITY OF PALMER PUBLIC WORKS, TO FIELD LOCATE ALL UTILITIES PRIOR TO DIGGING. ANY DISCREPANCIES SHALL BE BROUGHT TO THE ATTENTION OF THE ENGINEER PRIOR TO DIGGING, OTHERWISE CONTRACTOR IS RESPONSIBLE FOR ALL ADDITIONAL COSTS ASSOCIATED WITH WORKING AROUND UTILITIES DIFFERENT THAN WHAT IS SHOWN ON THESE PLANS.
- THE CONTRACTOR SHALL ESTABLISH, PROVIDE, AND MAINTAIN EFFECTIVE QUALITY CONTROL IN ACCORDANCE WITH DIVISION 10.
- THE CONTRACTOR SHALL PROVIDE ALL LIGHTS, SIGNS, BARRICADES, FLAG MEN OR OTHER DEVICES NECESSARY TO PROVIDE FOR SAFETY.

SCOPE OF WORK

ALL WORK NECESSARY TO CONSTRUCT THE IMPROVEMENTS AS INDICATED, INCLUDING LABOR, MATERIALS, EQUIPMENT, COORDINATION AND QUALITY CONTROL/ASSURANCE AS SHOWN ON THE DRAWINGS AND AS SPECIFIED.

CALL BEFORE YOU DIG!
 THE CONTRACTOR SHALL NOTIFY ALL AREA UTILITY COMPANIES PRIOR TO COMMENCEMENT OF EXCAVATION
 LOCATE CALL CENTER OF ALASKA 1-800-478-3121
 CITY OF PALMER PUBLIC WORKS 745-3400

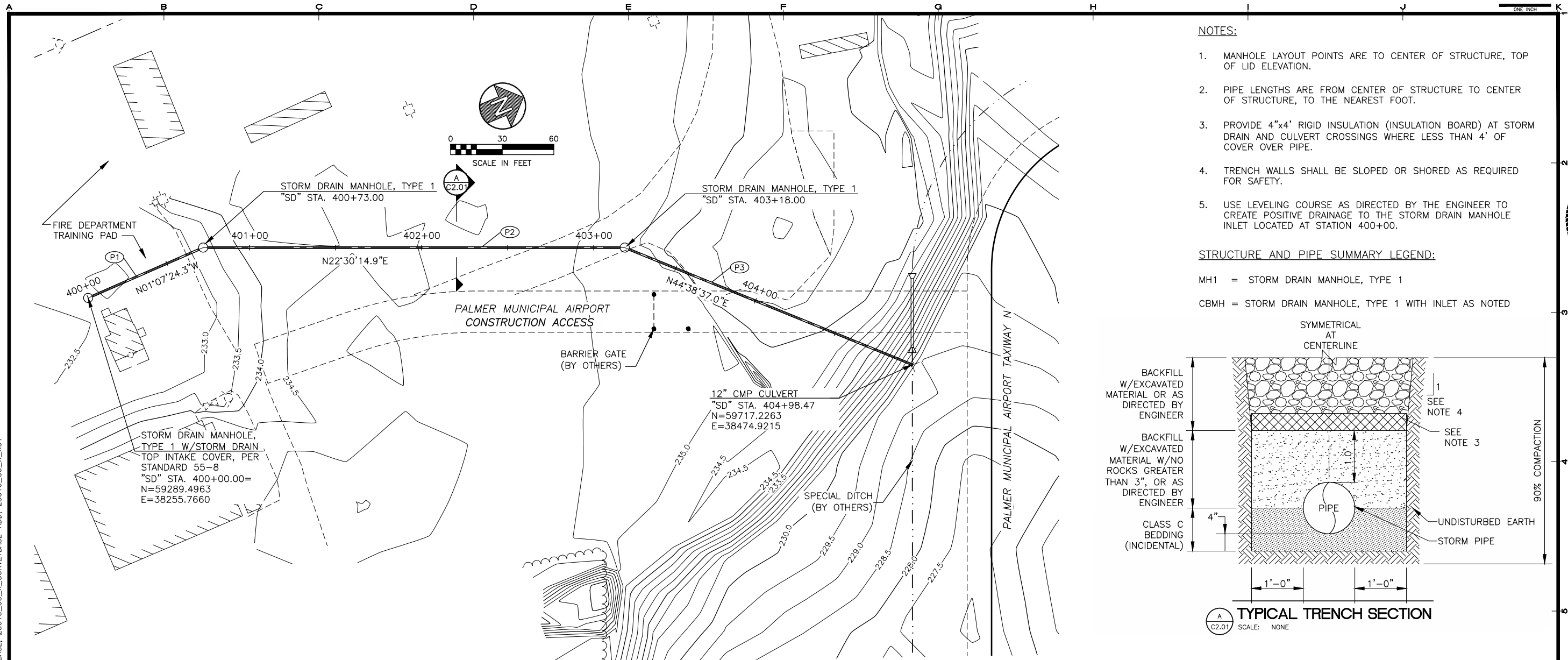
FIRE TRAINING CENTER DRAINAGE IMPROVEMENTS
 CITY OF PALMER
 PALMER, ALASKA

SHEET TITLE
 COVER

SHEET
G1.01

DRAWN BY: MCE CHECKED BY: MCC
 DATE: JUNE 2024 SCALE: NONE
 JOB NUMBER: 23-010

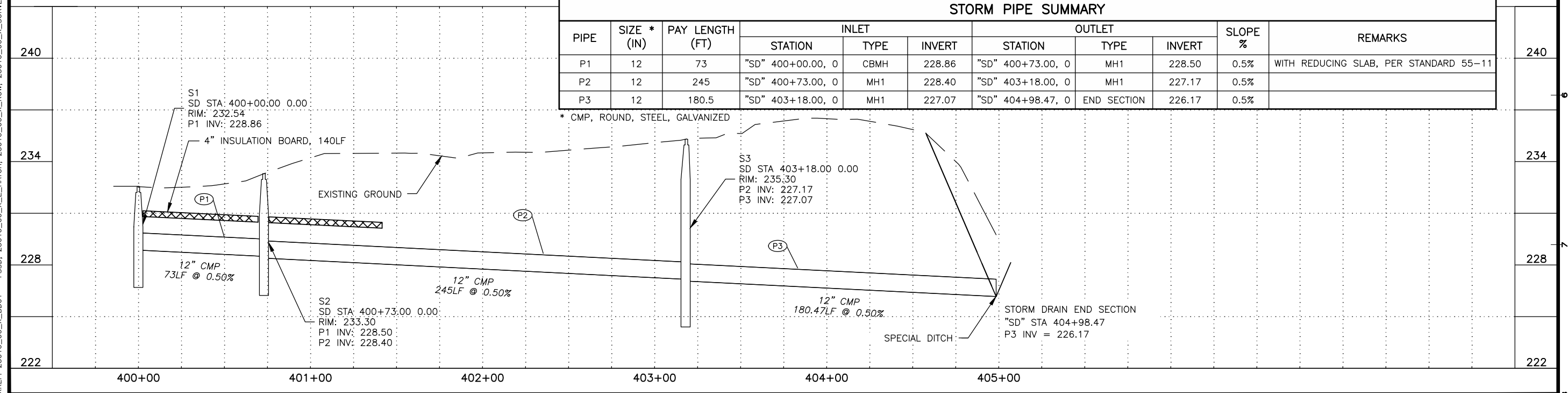
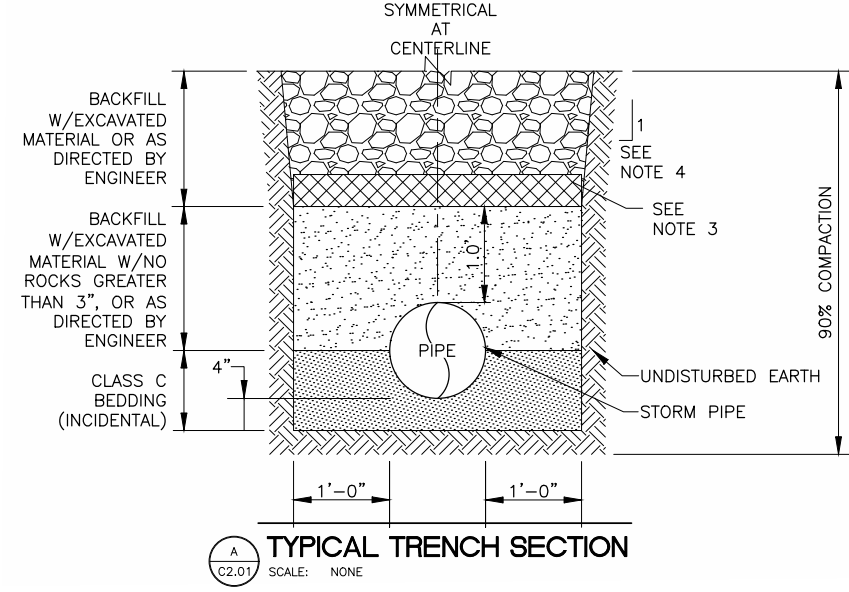
H:\jobs\23-010 Palmer Fire Training Center Storm Drain (COP)\CAD\Drawings\23010_00_C201, 1=1, 05-30-24 at 09:59 by MCE
 LAYOUT: C2.01
 VIEW: C2.01 - PLAN
 XREF: 23010_00_X_BDD1 - FSSD, 23010_00_X_E_HATCH, 23010_00_X_ROW, 23010_00_X_SURVEYBASE, 23010_00_X_SURVEYBASE-ADD, 23010_00_X_X01



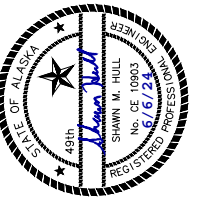
- NOTES:
- MANHOLE LAYOUT POINTS ARE TO CENTER OF STRUCTURE, TOP OF LID ELEVATION.
 - PIPE LENGTHS ARE FROM CENTER OF STRUCTURE TO CENTER OF STRUCTURE, TO THE NEAREST FOOT.
 - PROVIDE 4"x4' RIGID INSULATION (INSULATION BOARD) AT STORM DRAIN AND CULVERT CROSSINGS WHERE LESS THAN 4' OF COVER OVER PIPE.
 - TRENCH WALLS SHALL BE SLOPED OR SHORED AS REQUIRED FOR SAFETY.
 - USE LEVELING COURSE AS DIRECTED BY THE ENGINEER TO CREATE POSITIVE DRAINAGE TO THE STORM DRAIN MANHOLE INLET LOCATED AT STATION 400+00.

STRUCTURE AND PIPE SUMMARY LEGEND:

- MH1 = STORM DRAIN MANHOLE, TYPE 1
 CBMH = STORM DRAIN MANHOLE, TYPE 1 WITH INLET AS NOTED



REVISIONS	MARK	DATE	DESCRIPTION
1			
2			
3			
4			
5			



HDL ENGINEERING Consultants LLC
 civil - geotechnical - surveying - environmental - material testing
 ANCHORAGE MAT-SU 907.564.2120
 KENAI 907.746.5230
 PALMER 907.564.2120
 3335 Arctic Boulevard, Suite 100 Anchorage, AK 99503
 www.HDLalaska.com
 AECL961

FIRE TRAINING CENTER DRAINAGE IMPROVEMENTS
 CITY OF PALMER
 PALMER, ALASKA

SHEET TITLE
 PLAN & PROFILE
 BOP TO EOP

SHEET
C2.01

DRAWN BY: MCE
 CHECKED BY: MCC

DATE: JUNE 2024
 SCALE: AS NOTED

JOB NUMBER:
 23-010